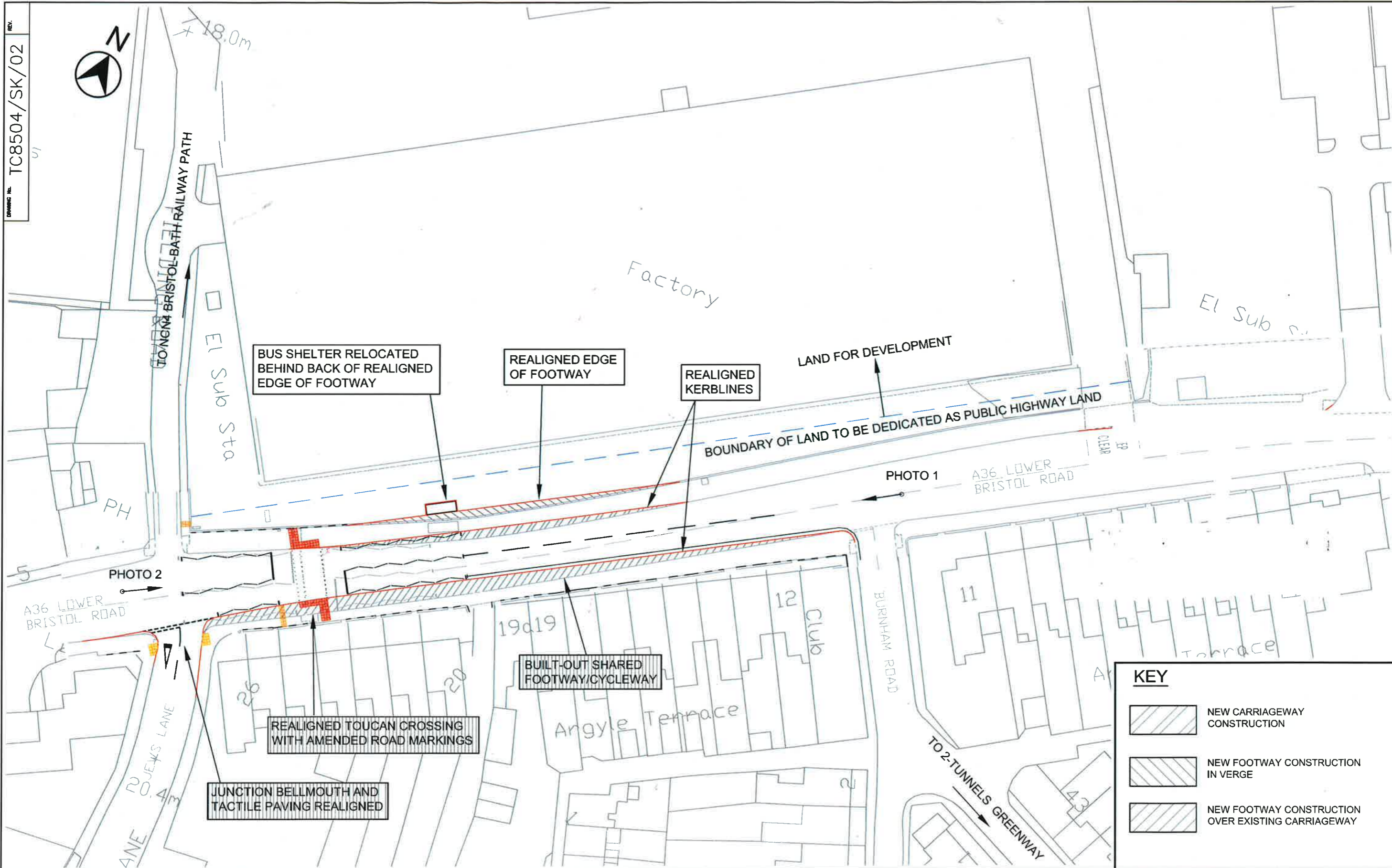


REV. 51  
 DRAWING No. TC8504/SK/02



**KEY**

- NEW CARRIAGEWAY CONSTRUCTION
- NEW FOOTWAY CONSTRUCTION IN VERGE
- NEW FOOTWAY CONSTRUCTION OVER EXISTING CARRIAGEWAY

**Bath & North East Somerset Council**  
 KELVIN PACKER  
 SERVICE MANAGER - HIGHWAYS AND PARKING ENVIRONMENTAL SERVICES

PRODUCED BY  
 DESIGN GROUP

SCHEME TITLE  
 2 TUNNELS GREENWAY  
 NORTHERN LINK

DRAWING TITLE  
 FIELDING'S ROAD PEDESTRIAN  
 CROSSING IMPROVEMENT WORKS

REV.	DATE	REVISIONS	DRAWN	CHKD.	APPROV.

DATE NOV 2012	DRAWN BY TRH	APPROVED BY
SCALE 1:500@A3	CHECKED ST	
CLIENT REF. A36 LOWER BRISTOL ROAD FIELDING'S RD PEDESTRIAN CROSSING WORKS		
DRAWING No. TC8504/SK/02		REV.